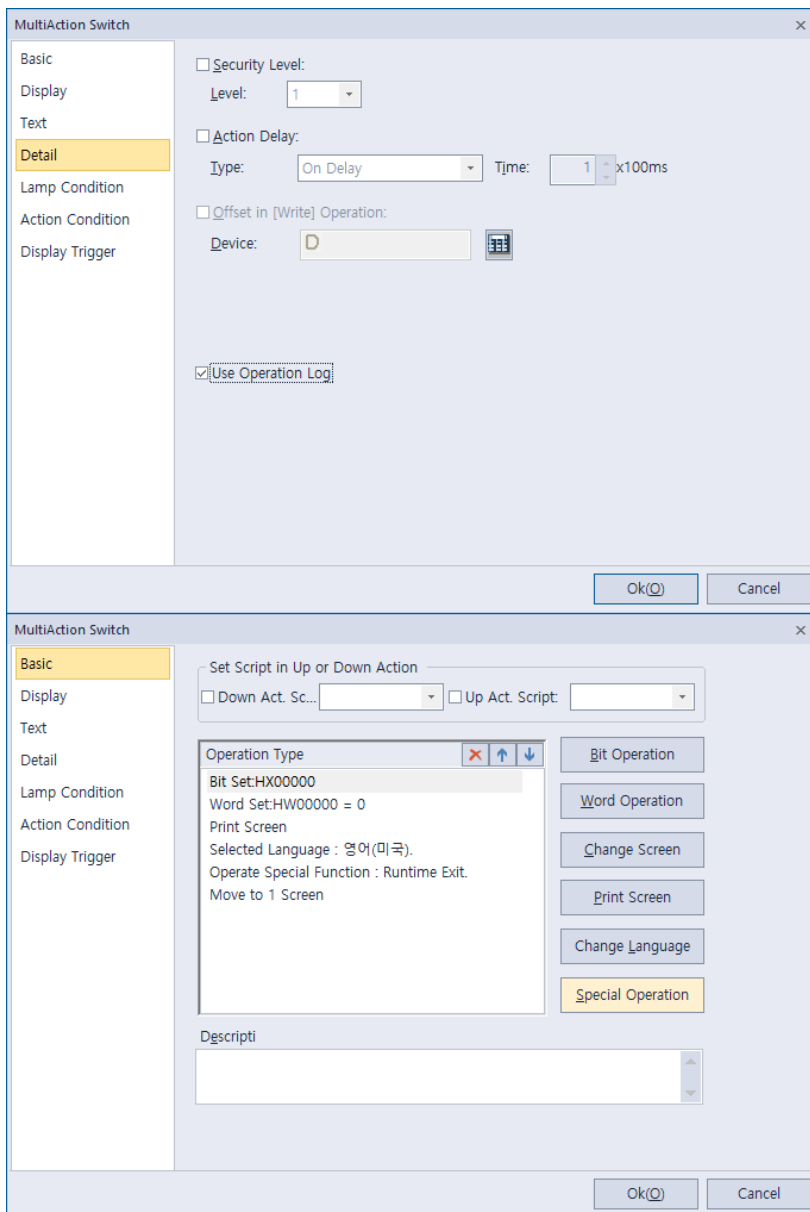


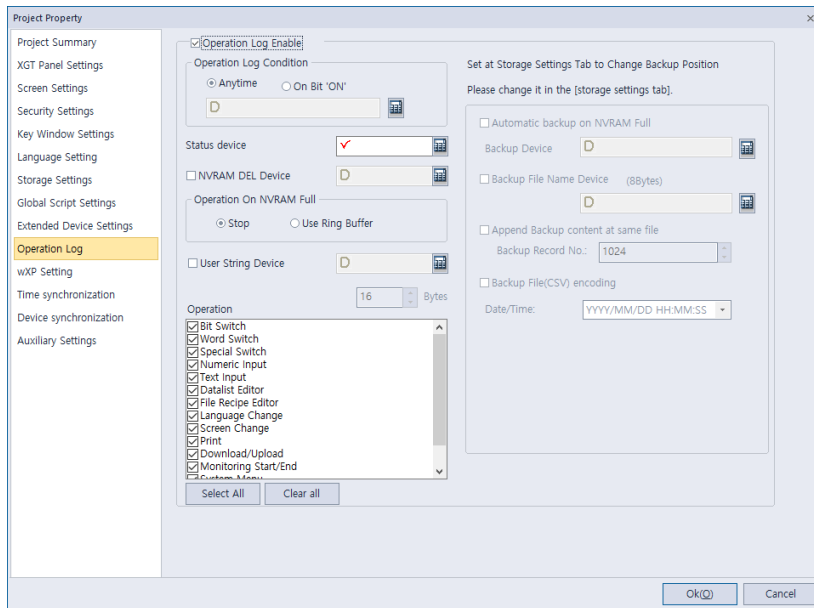
XP-Builder V3.90 Improvement & Addition

1. Improvement & Addition

1) [XP-Builder] Improved Script toolbox UI/UX

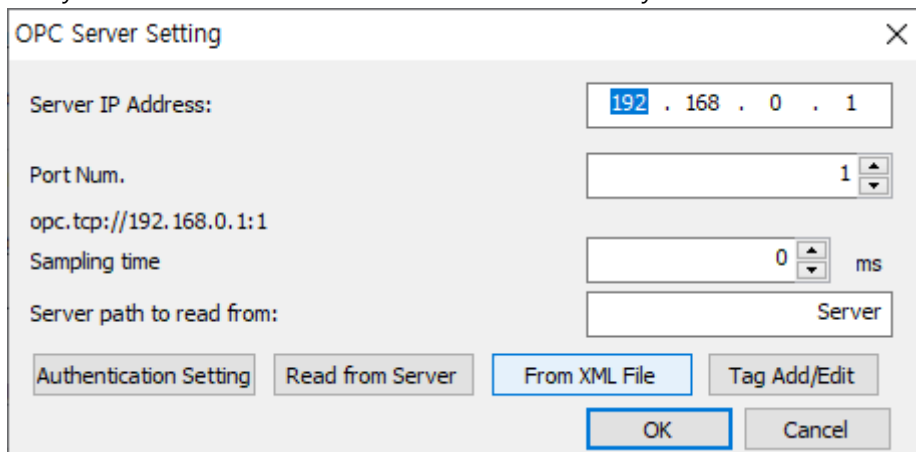
- Supports operation logs for individual actions registered in multiple switches. If individual actions that can be recorded as operation logs, such as bit actions, word actions, screen switching, language switching, and special switches, are set in multiple switches, operation logs are recorded for those actions.





2) [XP-Builder] Support for parsing OPC UA server xml files

- From XML: You can import variables from standard XML where OPC UA Server variables are stored. Only variable names in XML files that comply with the OPC UA standard are imported, and you can edit variables added from XML even if you are not connected to the server.



2. Error Correction

- 1) [XP-Builder] Fixed the phenomenon of not being able to read saved image files when capturing screens in the simulator
- 2) [XP-Builder] Fixed the phenomenon of project files being intermittently saved as OKB when saving
- 3) [XP-Builder] Fixed the error in Korean/English notation when setting up an email server
- 4) [XP-Builder] Fixed the phenomenon of XP-Builder abnormally ending when pressing the reference button in the device setting window
- 5) [XP-Builder] Fixed the phenomenon of characters being cut off when setting a special switch in English XP-Builder
- 6) [XP-Builder] Fixed the phenomenon of numbers not being displayed when simulating a Siemens project
- 7) [XP-Builder] Fixed the phenomenon of abnormal termination when reading an OPC-UA Server
- 8) [XP-Runtime] Fixed the phenomenon of values intermittently jumping when operating a trend graph
- 9) [XP-Runtime] Fixed the abnormal operation when entering barcode reader data
- 10) [XP-Runtime] Fixed the phenomenon of clock value being updated abnormally when entering monitoring
- 11) [XP-Runtime] The phenomenon of (Offset) being displayed when viewing an address Fix
- 12) [XP-Runtime] Fixed English text in message window related to NVRAM deletion
- 13) [wXP] Fixed phenomenon where IP search does not work when 2 Ethernet ports are connected

3. Communication Driver

1) Add

- (1) Developed 2 types of Siemens S7-200 Smart communication drivers
 - Siemens: SIMATIC S7 200 Smart Ethernet
 - Siemens: SIMATIC S7 200 Smart Serial

2) Improvement

- (1) Fixed the phenomenon of address being pushed when using Beckhoff communication
- (2) Changed the communication option text of 6 types of Modbus Master communication drivers
- (3) Changed the initial value of the transmission waiting time of 4 types of Modbus Master serial communication drivers
- (4) Moved the Modbus Slave communication driver to Modbus Standard
- (5) Fixed the text error of 3 types of Modbus Slave communication drivers
- (6) Fixed the English text error of the LS Inverter communication driver

XP-Builder V3.90.0909 Improvement & Addition

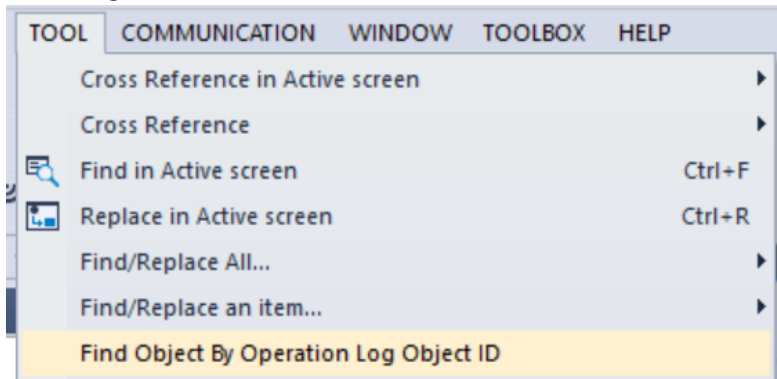
1. Updates

- 1) [XP-Builder] Fixed issue where the value changes when the minimum value of the logging scatter graph is set to negative.
- 2) [XP-Builder] Fixed issue where images in the user graphic library were deleted.
- 3) [XP-Builder] Fixed abnormal termination of the simulator when the device address in the history alarm exceeds 16 characters.
- 4) [XP-Builder] Fixed issue where the color of the text table was not applied when generating word messages.
- 5) [XP-Runtime] Fixed issue with displaying pie graph values when connecting more than two Keyence PLCs.
- 6) [XP-Runtime] Fixed abnormal operation of the MW region 32-bit address when using Beckhoff communication.
- 7) [XP-Runtime] Applied loopback frame handling for custom communication and fixed simulator abnormal termination.
- 8) [XP-Runtime] Fixed reset issue during screen transition when using B&R OPC UA communication.
- 9) [XP-Runtime] Fixed reset issue when multiple channels and common reference line devices are used in the scatter graph.
- 10) [XP-Runtime] Specified Windows simultaneous display standard (10 items) and added system alarm based on iXP2H performance.
- 11) [XP-Manager] Supported program monitoring for XBM-H/H2/HP models.
- 12) [XP-Manager] Improved auto-scan function
 - Supported automatic continuous reading.
 - Added a feature to display only network status when a specific node is dropped.
 - Set the default option to display the comparison results with the user topology settings.

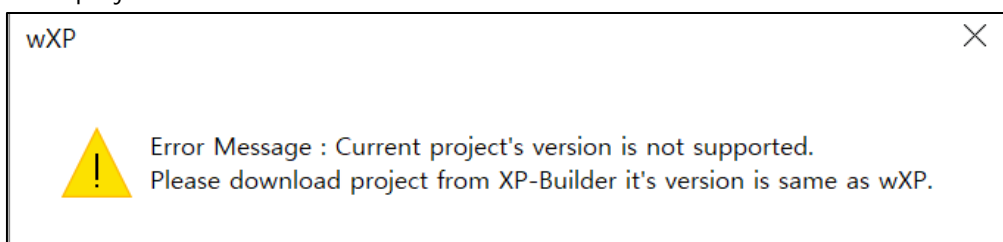
XP-Builder V3.90.1414 Improvement & Addition

1. Updates

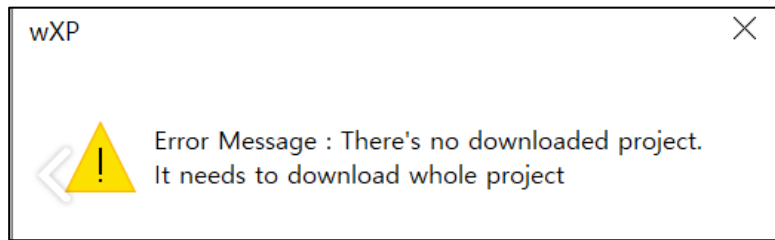
- 1) **[XP-Builder] Added Object ID Search in Operation Log:** A function has been added to search for objects using the operation log object ID due to differences in how object IDs are displayed in backed-up operation logs and in XP-Builder.



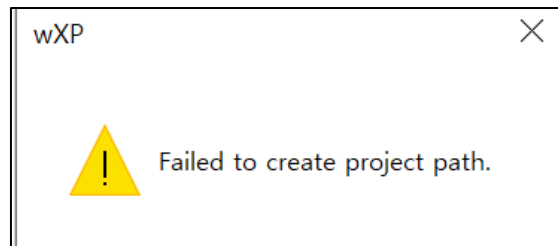
- 2) **[XP-Builder] Fixed Abnormal Termination Due to Insufficient Project Memory.**
 - Occurred saving project with different name.
 - Occurred when pasting a screen into certain screen designs and saving.
- 3) **[XP-Builder] Fixed Crash When a Graph with a Pattern is Present: Resolved abnormal termination when a graph with a pattern was used.**
- 4) **[XP-Builder] Fixed Truncated Keypad Settings Screen: Occurred when converting a text display object to a text input object.**
- 5) **[XP-Builder] Fixed Incorrect Error Message Display: Occurred when an HDMI extension device was not set**
- 6) **[XP-Runtime] Fixed Random Resets in eXP2:**
 - Resolved concurrency control issues during circular buffer operation.
 - Improved NVRAM access method during logging.
 - Added exception handling for corrupted logging time data.
 - Fixed characters display errors in backup log files.
- 7) **[XP-Runtime] Fixed Reset Issue During iXP2 Extended File Recipe Operation: Occurred due to file parsing errors.**
- 8) **[wXP] Enhanced Error Message Detail During Project Loading:**
 - When a project created in a different wXP version cannot be loaded due to a version mismatch



- When the project does not exist or files in the data folder are corrupted or missing



- When monitoring starts but directories cannot be created due to wXP settings configured in XP-Builder



XP-Builder V3.90.1716 Improvement & Addition

1. Updates

- 1) [XP-Builder] Fixed an issue where, when communicating with multiple station numbers via RS-485, a timeout occurred and other available station numbers could not be used.
- 2) [XP-Runtime] Fixed an issue where logging trend graph values were not displayed correctly.
- 3) [XP-Builder] Fixed an issue where string after certain special characters could not be imported when importing a text table.
- 4) [wXP] Fixed an issue where changes to gesture/multi-touch settings in offline settings were not saved when using PPC.

XP-Builder V3.90.1817 Improvement & Addition

1. Updates

- 1) [XP-Runtime] Fixed an issue where PDF files were not displayed in the eXP2 PDF Viewer object.
- 2) [XP-Builder] Fixed an issue where an OPC-UA error message was displayed in some environments when installing XP-Builder.
- 3) [XP-Builder] Fixed an issue where XP-Builder would abnormally terminate when finding/replacing all devices in some environments.